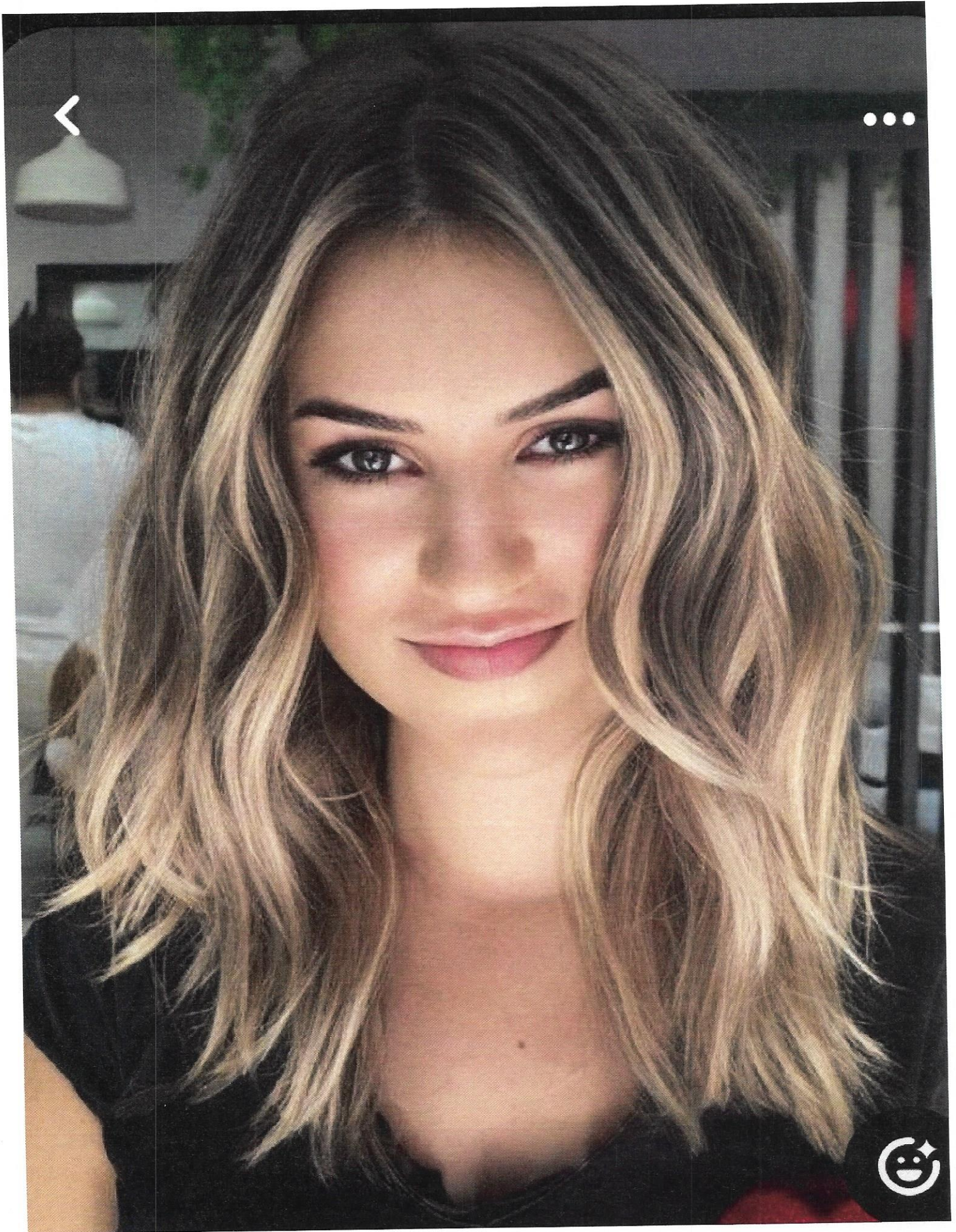


Cosmetology Schedule

9:00 a.m.	Check-in & Orientation	
9:30 a.m.	Ladies Combination Cut & Design	45 minutes
10:15 a.m.	Judging and Bathroom Break	15 minutes
10:30 a.m.	Long Hair Design – “Updo”	60 minutes
11:30 a.m.	Judging and Bathroom Break	15 minutes
12:00 p.m.	Lunch	30 minutes
12:30 p.m.	TEST	60 minutes
1:30 p.m.	Oral Presentation	45 minutes
2:15 p.m.	90-degree Haircut and Design	45 minutes
3:00 p.m.	Judging and Bathroom Break	15 minutes
3:15 p.m.	Short Cut and Design	45 minutes
4:00 p.m.	Clean Up	

Complete Kit Material Provided by the Contestant

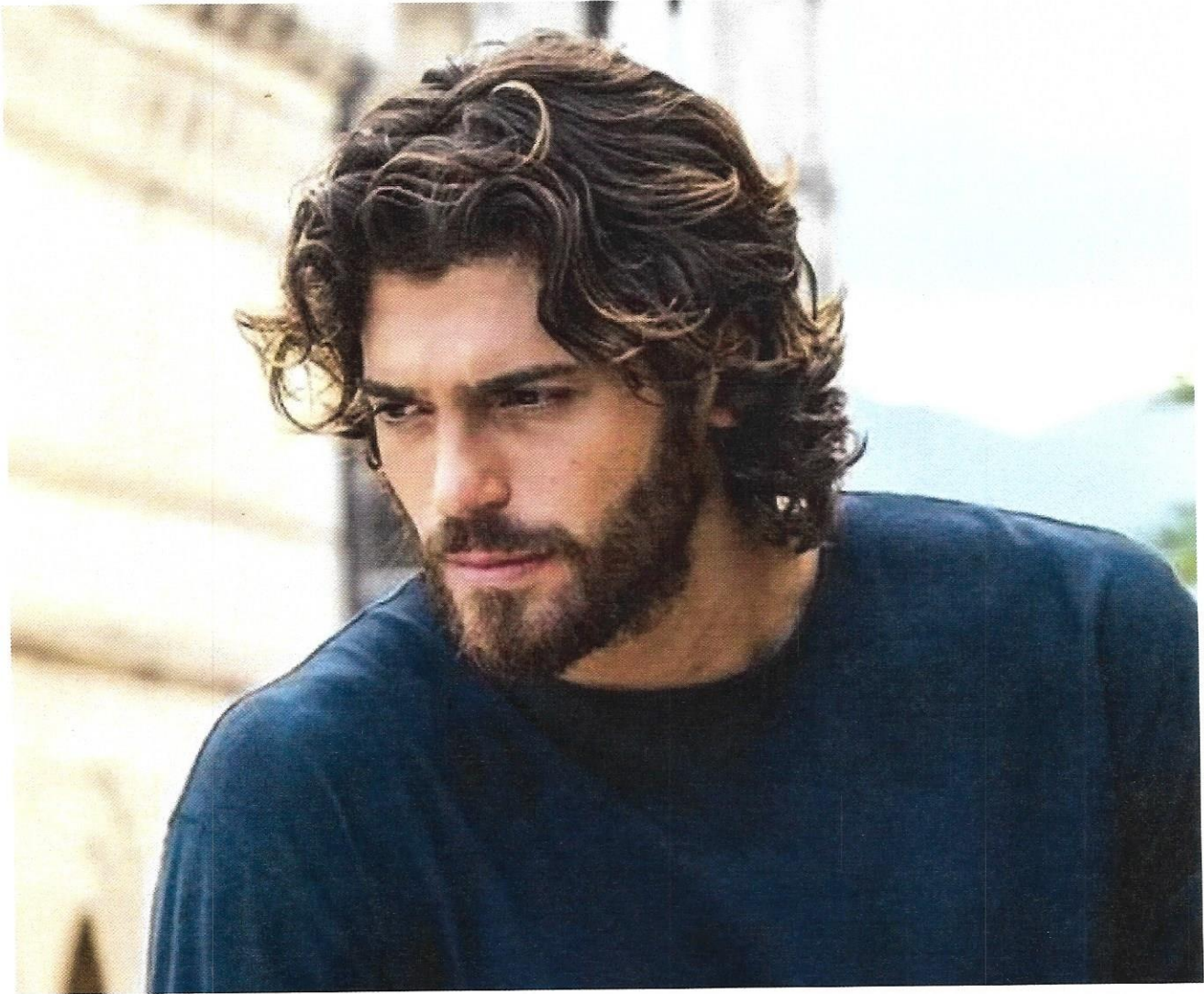
- Cutting Shears
- Thinning Shears
- Razor and spare blade
- Manikins:
 1. One for Updos
 2. One (New) for 3 cuts
- Manikin Stand (chair stand or table top)
- Thermal tools (flat iron and/or curling iron)
- Blow dryer
- Styling products of choice
- Finishing spray
- Combs
- Brushes
- Spray Bottle (labeled and filled with water)
- Towel (s)
- Clippies or hair clips
- First Aid Kit

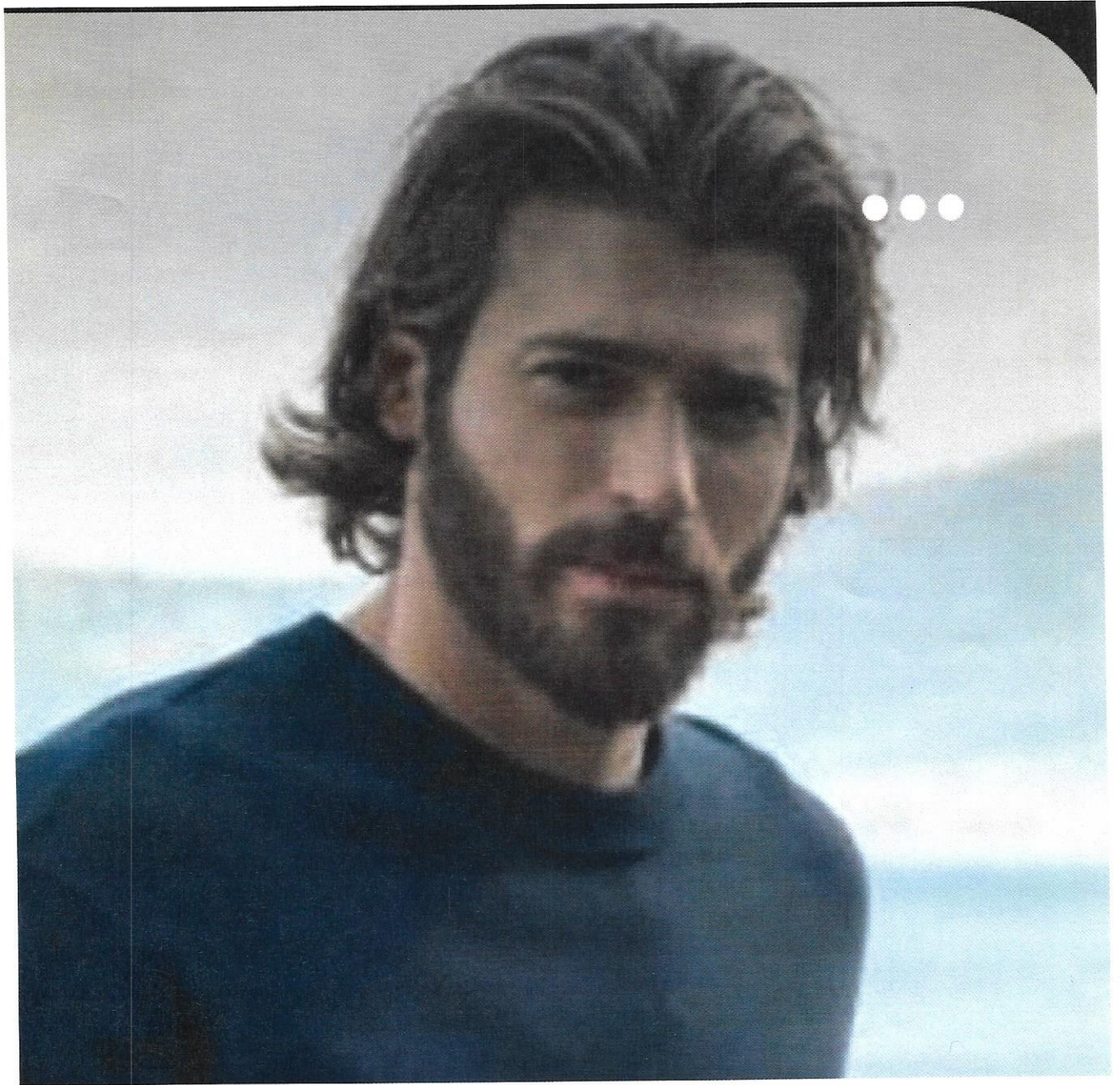


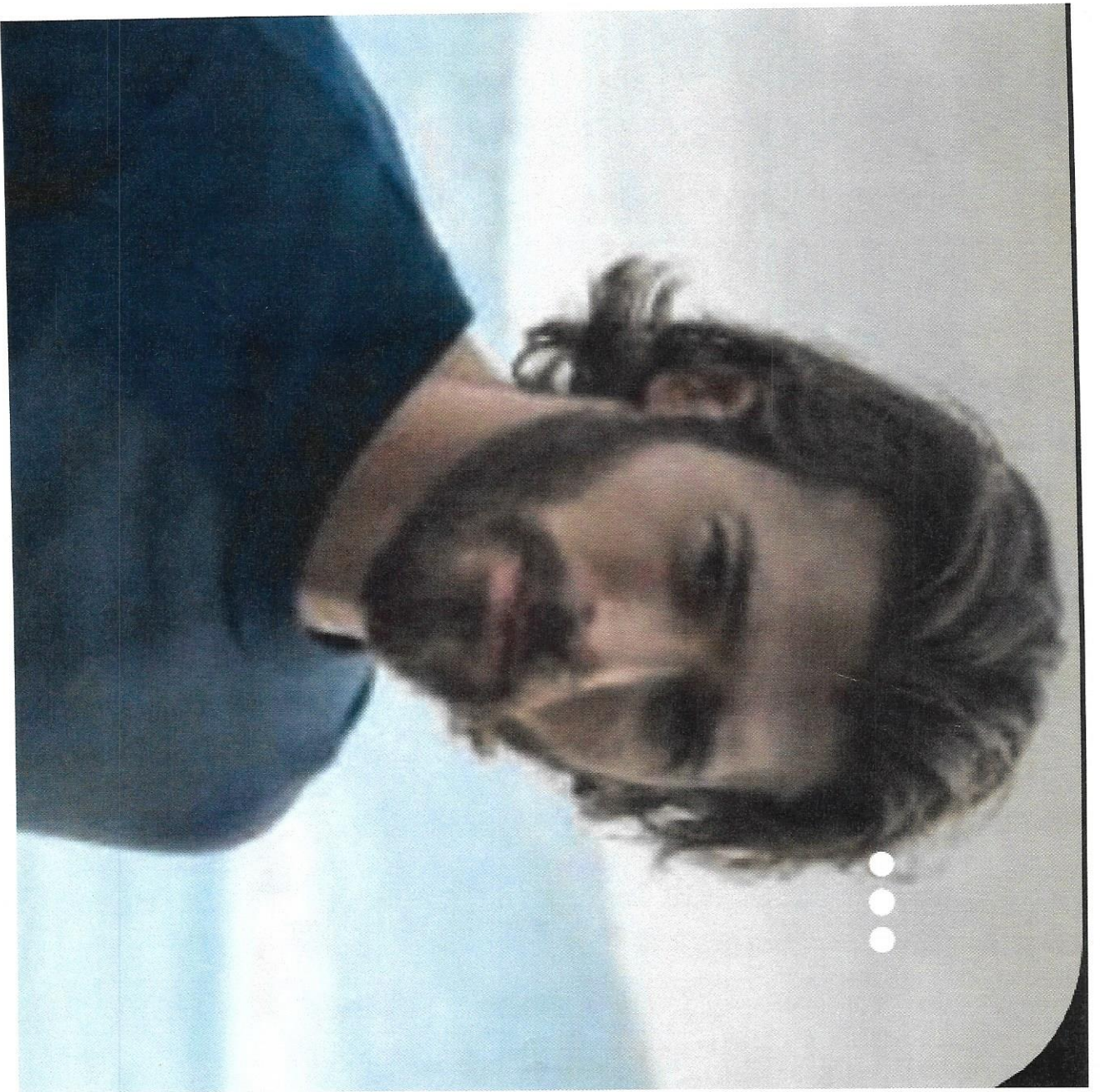












ESTHETICS

The Fantasy Makeup theme for Esthetics competition is Fairy Tale

9:00 a.m. Check-In, Orientation, Roll Call, resume and written description of constants' character must be turned in.

9:30 a.m.	Set Up and Client Protection	5 minutes
9:35 a.m.	Basic Facial	45 minutes
9:50 a.m.	Facial Massage	10 minutes
10:00 a.m.	Set up and Client Protection	5 minutes
10:05 a.m.	Daytime Make-up	45 minutes
10:50 a.m.	Judging and Bathroom Break	10 minutes
11:00 a.m.	Lunch and Bathroom Break	30 minutes
11:30 a.m.	TEST	60 minutes
12:30 a.m.	Set Up for Fantasy Make-up	5 minutes
12:35 a.m.	Fantasy Make-up	60 minutes
1:35 p.m.	Oral Presentation	
	Clean up	

Complete Kit Material Supplied by Contestant

1. Model

- a. Must be a student member but not necessarily from an esthetics program and may be either a high school or a college/postsecondary student.
- b. Must be dressed appropriately as described in the required clothing statement; must have hair pulled away from the face; must have a clean, cosmetic-free face; and must not wear earrings, facial piercings or necklaces (jewelry may be worn in the fantasy portion of the contest).
- c. Models are NOT required to take the Professional Development Test or the skill-related written test or to submit a resume.

2. Description:

- a. A written description of the contestant's character and interpretation within the theme is to be limited to one page, typewritten and contained within a plastic sleeve.
- b. The description must be submitted at the contestant check-in. No exceptions.
- c. Late or no description will result in a 10-point penalty.

3. Portable kit organizer (to transport and store items needed during the contest)

4. All items necessary for daytime makeup application. All cosmetics must be in original packaging.

5. All items necessary for fantasy makeup application must be in the original packaging (items will be checked during fantasy makeup portion of contest)

6. All necessary applicators and materials such as:

- a. Cleaners, toners, moisturizer etc. for facial
 - b. Spatulas
 - c. Cotton swabs
 - d. Fan and mask brushes
 - e. Cotton 4X4 pads or sponges
 - f. Tissues
 - g. Mascara wand
 - h. Makeup brushes
 - i. First Aid Kit
7. All applicators must be disposable or sanitized.
8. Eyelashes
- a. Adhesives
 - b. Tweezers
 - c. Scissors and necessary application tools.
9. Minimum of six clean, white terry towels (no holes or stains, may have identifying marks, no school or contestant name). For beauty portion contestants can use paper towels. Any large towels used will result in a 5-point deduction.
10. Headband
11. Proper draping and facial chair supplies:
- a. Cape for makeup application
 - b. One fitted and one flat white, clean, twin-size sheet.
 - c. One pillow with clean white pillowcase.
12. Plastic bags labeled for trash and soiled linens (large zip-lock bags are recommended that fit linens and towels)
13. Latex-free gloves (at least two pairs)
14. Paper towels or tissues (can be mini travel size)
15. Decontamination supplies for hands, equipment and implements (must be EPA approved, e.g. (but not limited to) Barbicide, Ultronic).

16. Stainless steel bowl for water (1 1\2 quart minimum size)
17. Blood exposure kit must have a plastic bag and be properly labeled for trash. A first-aid kit alone is not acceptable.
 - No other items are allowed
 - All cosmetic, sanitizers and disinfectants must be in original manufacturer's packaging.
 - No liquid eyeliner

Nail Care Contest

9:00 a.m.	Check-In and orientation	
9:30 a.m.	Roll call	
9:35 a.m.	Acrylic	1 hour
10:05 a.m.	Judging & Bathroom Break	15 minutes
10:20 a.m.	Gel	1 hour
11:20 a.m.	Judging & Bathroom Break	15 minutes
11:35 a.m.	Oral Presentation	30 minutes
12:05 p.m.	LUNCH	30 minutes
12:35 p.m.	TEST	60 minutes
1:35 p.m.	Nail Art/ Polish	1 ½ hours
3:05 p.m.	Clean up	

Complete Kit Material Supplied by Contestant

Safety glasses for competitor and model

White terry towels (no holes or stains allowed)

Disposable towels for the table

Water dispenser

Hand sanitizer

Plastic bag Labeled for TRASH

All items necessary to complete five sculptured acrylic nails. NOTE: Dappen dishes must have covers; monomer, polymer and primer must be from the same manufacturer.

All items necessary to complete five nails with a tip and light-cured enhancement overlay.

Dark red crème lacquer/polish.

UVA light

All items to complete flat-paint nail art application. Top coat may be used as a sealer.

Written description of the nail art theme. Themes are to be typewritten, should include pictures and be contained within a plastic sleeve. NOTE: Due at competition check-in

Photo of nail art to be created during the competition.

The photo may include props. NOTE: Due at check-in.

Portable kit organizer (to transport all items necessary for the competition.)

Manicure table lamp and electrical extension cord (optional)

Electrical files are NOT allowed.